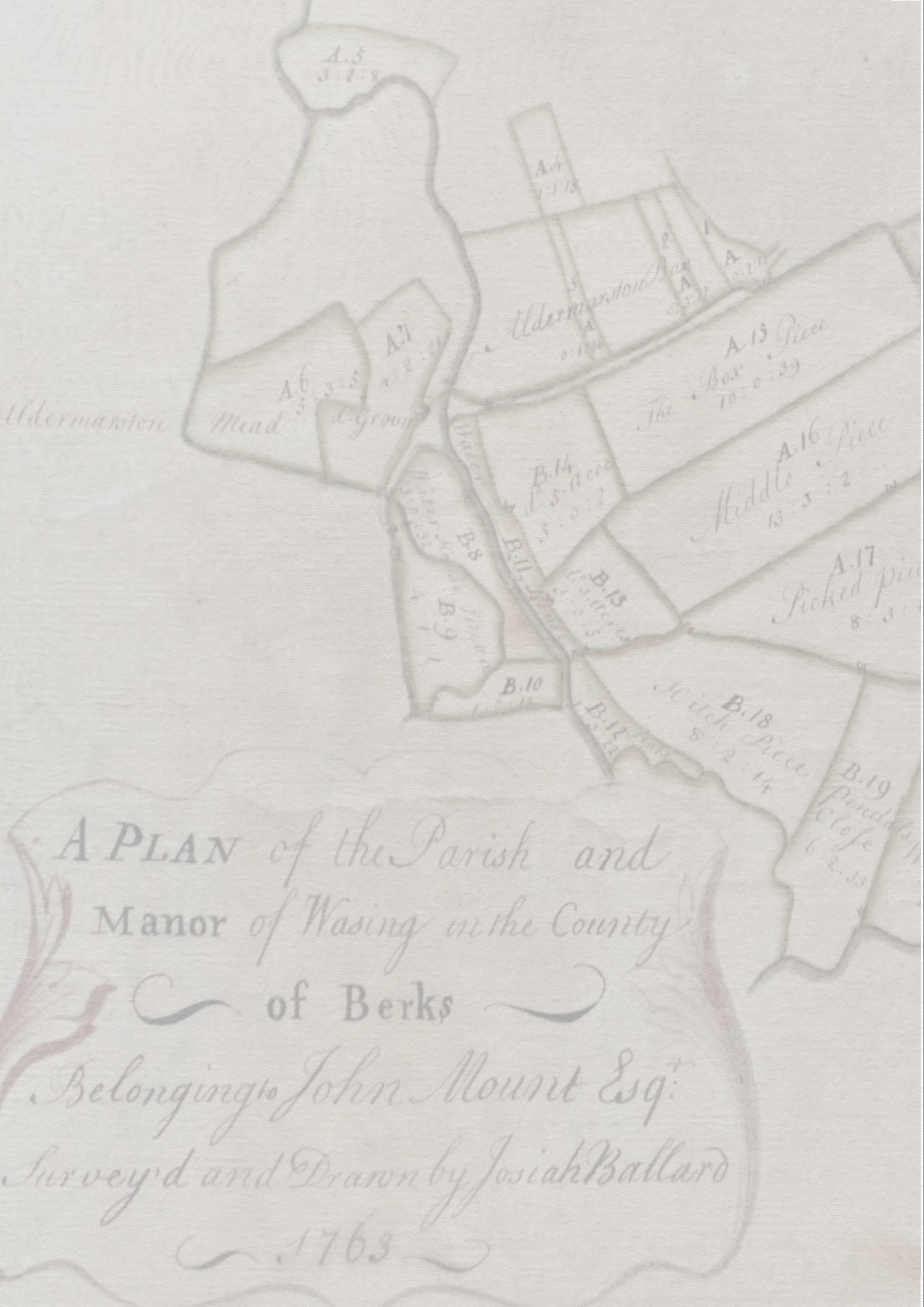


WASING


1759



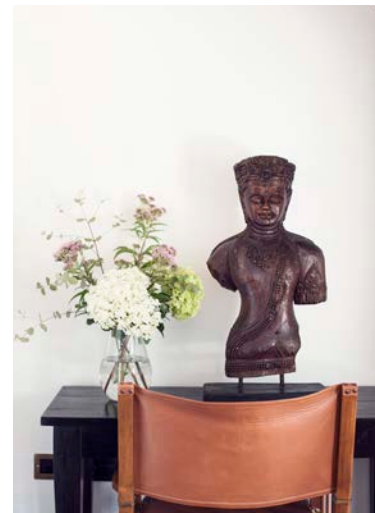
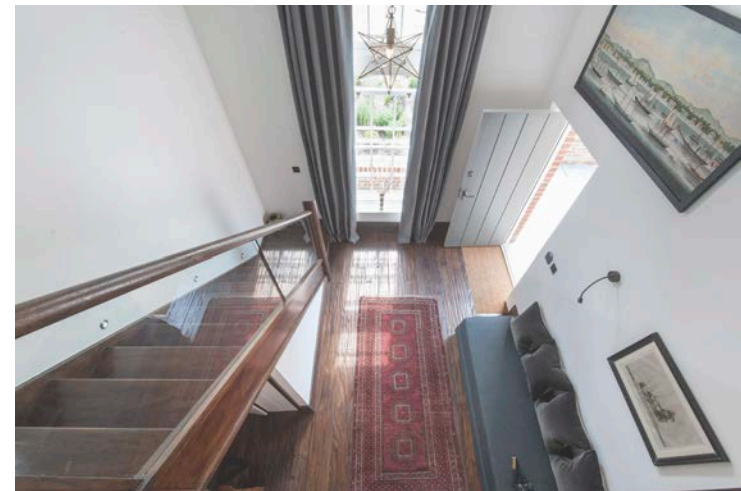
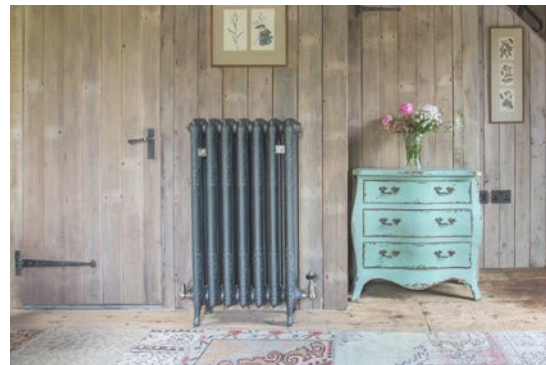


1759

ACCOMMODATION



The Stables Lodge boutique hotel has been artistically and imaginatively restored. This idyllic space includes a stunning bar and lounge and 26 individual bedrooms, creating a hamlet in the heart of the venue, which is exclusively yours for the day.



The Granary, Dovecote and Smithy are stunning former traditional farm buildings. They have been lovingly converted in to three of the most unique suites in the country. The Dovecote with it's triangular bed, the Granary sat on it's staddle stones and the old blacksmiths shop, the Smithy are all Grade II listed, incredibly romantic and full of character and charm.

These three individual suites along with the Coach House and Honyemoo Suite form the Old Estate Rooms.

THE HONEYMOON SUITE



This former hayloft is a truly idyllic place for the honeymoon suite. It is incredibly spacious with the biggest bed in Berkshire, and will leave you with the most romantic and happy memories to last a lifetime!



THE GRANARY



THE DOVECOTE



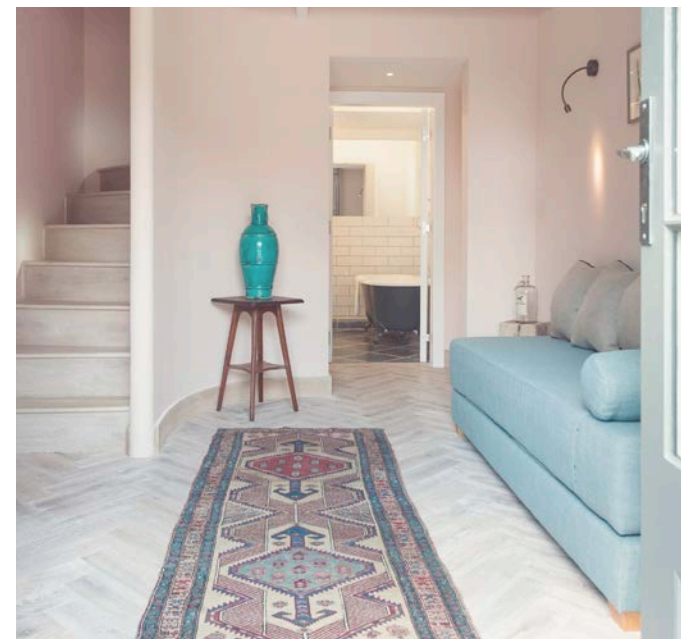
THE SMITHY



THE COACH HOUSE



The Coach House has five contemporary suites all with luxurious bathrooms, set over two floors with the added advantage of twin sofa beds on the ground floor.



GUEST BEDROOMS



There are 17 individually designed bedrooms in the Stables, the Mews and the Pump House. These rooms are available for guests, provided the Old Estate Rooms are booked.



THE STABLES BAR & LOUNGE



Sink in to one of our sumptuous sofas and enjoy the newly painted mural surrounding the bar, featuring the beautiful flora and fauna of Wasing. See if you can find the hidden Dove!

The bar opens from midday and is open to all guests. It re-opens to resident guests only, after the wedding celebrations have finished and closes at 1:30 am, should you choose that option. It's the perfect way to end your day and reflect with your closest family and friends.

English breakfast is served at 9 am the morning after your wedding to all resident guests.





THE BRIDAL COTTAGE



This beautiful cottage, on the edge of the woodland on the Estate, is available the night before your wedding. It is complimentary, subject to you taking the Old Estate Rooms package. It is the perfect place for you to relax with your bridal party the night before the big day. You can book yoga, breath work and meditation with our yoga instructor to whirl away all those pre-wedding nerves.

The following morning hair and make up can start from the crack of dawn. At midday you can drive up to the honeymoon suite to finish your wedding preparations.



THE GROOMS ROOM



The Grooms Room is positioned overlooking the beautiful courtyard, a stones throw from the Church. The groom and his ushers can gather here from 10.30am. It is just around the corner from the bar which is always handy!



ACCOMMODATION

1. Stables Lodge
2. The Mews
3. The Pump House
4. The Coach House
5. The Granary
6. The Smithy
7. The Dovecote



FAQS

WHAT'S INCLUDED

HONEYMOON SUITE ONLY

- Overnight accommodation including breakfast in bed (the Bridal Cottage the night before the wedding, the Grooms Room, Long Stable and bar will not be available).

THE OLD ESTATE ROOMS

- The Bridal Cottage the night before the wedding.
- Overnight accommodation in the Honeymoon Suite, including breakfast.
- Overnight accommodation in eight luxurious suites in the Coach House, Dovecote, Granary and Smithy, including breakfast.
- Grooms Room for the groomsmen to get ready in.
- Lounge and bar in the Stables Lodge – exclusive to wedding guests.
- Complimentary tea, coffee and water in the Stables Lodge.
- Christmas tree (December weddings) in the Stables Lodge.

ALL WASING PARK ACCOMMODATION

- As per the Old Estate Rooms.
- Overnight accommodation in 17 guest bedrooms, including breakfast.

TIMINGS

Q. What time can I access the Bridal Cottage the night before my wedding?

A. Check in is at 4.00 pm, check out is at midday on the wedding day.

Q. What time can I access the Groom’s Room?

A. You are welcome to use this space from 10.30 am on the morning of the wedding.

Q. What time can I access the Honeymoon Suite?

A. The Honeymoon suite can be accessed from midday on your wedding day.

Q. What time can guests check in?

A. Guests can arrive from midday and relax in the Stables Lodge where complimentary tea, coffee and water will be available and the bar will be open. Guests can access their rooms as soon as they have been serviced. All rooms are guaranteed to be ready by 2.00 pm. Generally, two guest rooms will be ready from midday and then approximately every 15 minutes thereafter a guest room will become available.

Q. What time will the Stables bar be open?

A. Midday until half an hour before the wedding ceremony.

Q. What time and where is breakfast served the morning after my wedding?

A. In the Stables Lodge at 9.00 am (unless you only take the Honeymoon Suite and then it is served in the room). If you have special dietary requirements please note these on your bedroom booking form.

Q. What time do guests need to check out of their rooms at the Stables Lodge?

A. Check out is 10.30 am.

Q. If rooms are available the night before our wedding, what time can we check in?

A. Check in on non-wedding days is from 3.00 pm.

Q. Can guests staying off-site leave their cars overnight at the venue?

A. Yes, however we ask that they collect their cars by 10.30 am at the latest the following morning.

GENERAL

Q. Do I have to take all the accommodation?

A. No, the choice is yours. You may either book:

- The Honeymoon Suite only – weddings not taking the ‘Old Estate Rooms’ will have access to the Honeymoon Suite only and breakfast will be served in the Honeymoon Suite.
- The Old Estate Rooms – nine suites including the Honeymoon Suite.
- All Wasing Park Accommodation – nine suites and 17 rooms (alternatively, your guests can book and pay for the extra bedrooms direct, providing you have booked the Old Estate Rooms).

Q. Can guests book bedrooms direct with Wasing Park?

A. If you book the Old Estate Rooms, we will make the extra 17 bedrooms available online for your guests to book and pay for direct with Wasing Park. We will send you the website address and password, for you to pass on to your guests (the link to the booking page will not be visible on the Wasing website). Guests cannot book and pay for the Old Estate Rooms direct with Wasing.

Q. How many bedrooms are there at Wasing Park?

A. There are a total of 26 double bedrooms:

- The Honeymoon Suite
- The Coach House – Five suites

All with extra double sofa bed option, ideal for families and friends.

- The Granary – Suite

King size double bed plus extra twin bed option downstairs, ideal for families and friends.

- The Dovecote – Suite

Triangular shaped double bed.

- The Smithy – Suite

Emperor bed.

- The Stables – Nine double bedrooms including an accessible room, three of the rooms can be twins.
- The Pump House – Six double bedrooms including an accessible room and two of the rooms can be twins.
- The Mews – Two double bedrooms

Q. Can I allocate certain rooms to certain guests?

A. Yes. We will contact you eight weeks before your wedding to request your final bedroom allocation details for the Old Estate Rooms or all Wasing Park Accommodation and any extra requirements for your stay.

Q. Do you have disabled facilities?

A. There is a disabled WC at the Stables Lodge and there is a disabled lift to access the lounge, bar and dining room. There are two accessible bedrooms.

Q. Does the venue supply travel cots?

A. No, in the interest of Health and Safety.

Q. Do you have facilities for babies?

A. Yes, we have baby changing facilities in the communal area and high chairs at the Stables Lodge.

Q. I need more bedrooms for my guests. What do you suggest?

A. Apart from the accommodation at Wasing Park there is another offering, Home Farmhouse, on the Estate. Please note Home Farmhouse is not within Wasing Park, the exclusive use zone, and is not guaranteed to be available on the day of your wedding. Home Farmhouse is a delightful six -bedroom property located at the top of the main drive, a two-minute walk from the venue. Wasing provide a complimentary full English breakfast each morning of the stay. It is not possible for guests staying at the farmhouse to join you for breakfast at the Stables. Kitts Cottage may be available for the night of your wedding also; however, we are not able to guarantee availability until three months before your wedding day.

Q. Can I book bedrooms for the night before my wedding?

A. Yes, Home Farmhouse, subject to availability as bookings are taken on a first come first served basis. Sometimes the bedrooms are available at the venue but these can only be confirmed one week prior to your wedding date. Please contact us to check availability nearer the time.

Q. Can I stay in the Honeymoon Suite the night before my wedding?

A. No, we are sorry but this is not possible.

Q. Do you have a changing room for my band to use?

A. Yes, your band is welcome to use the Grooms Room by prior arrangement.

Q. When do you require full payment for the accommodation?

A. Payment for the Honeymoon Suite the Old Estate Rooms or all Wasing Park Accommodation for the night of your wedding is due eight weeks before your wedding.



Accommodation
wasingpark@wasing.co.uk

Wasing Leisure Ltd
Wasing Park, Wasing Lane,
Aldermaston,
Berkshire, RG7 4NG



Images by Studio Rouge and Ed Dabney



